



Building Bridges

2015 Annual Conference

Penn State University

The Pennsylvania Environmental Resource Consortium is made possible by its dues-paying Member Institutions and the following Sponsors. We deeply appreciate their support.

Sustaining Annual Sponsor



Gold Event Sponsor

Nissan LEAF

100% Electric

Gold Annual Sponsors



Silver Annual Supporter



AGENDA

Engaging Sustainability

Fall Conference & Annual Meeting

8:00-9:00am	Check-in, tour sign up, light refreshments, networking
9:00-9:15am	Conference begins, opening remarks
9:15-9:25am	► Host Institution
9:25-10:00am	◆ PANEL PA HIGHER ED FOOD RECOVERY CHALLENGE-PROGRESS AND BENEFITS
10:00-10:30am	◆ SPEAKER: MICHAEL WALSH, DCNR MODELING SUSTAINABILITY THROUGH PARTNERSHIPS
10:30-10:45am	► Coming Attractions-preview of events
10:45-11:00am	► PERC business-Exec Committee Elections
11:00-12:00m	◆ KEYNOTE SPEECH: JOHN QUIGLEY "BUILDING BRIDGES"
12:00-1:00pm	Lunch, networking, Poster Session
1:00- 2:00pm	◆ SHOWCASING SUSTAINABILITY An interactive session with John Quigley
2:00-2:45pm	◆ 2015 CAMPUS SUSTAINABILITY CHAMPIONS
2:45-3:00pm	► Break, Networking
3:00-3:55pm	◆ BREAKOUT GROUPS: CLIMATE, WATER, FOOD SYSTEMS OR TOUR of PSU's Eco-MACHINE
3:55-4:00pm	Closing Remarks

Gratitude

Thanks to our host: [Penn State's Sustainability Institute](#) for their generous underwriting of today's Poster Session. Thanks especially to Susannah Barsom of the Sustainability Institute who worked tirelessly to make this conference happen. Thanks also to Kathy Schreiber (Millersville) and Rich Bowden (Allegheny) for chairing Campus Sustainability Champions session and Poster Session—and to Kathy Straub and Don Brown for moderating Sec. Quigley's sessions. Sodexo's Carty McMullen and George Cashmark were instrumental in constructing the Food Recovery content. And finally, thanks to the entire Executive Committee and to Sec. John Quigley, Dep. Sec. Michael Walsh, the U.S. EPA's Luke Wolfgang and all the speakers for giving so generously of their time.

SPONSORED BY

The conference is made possible by PERC Member Institutions, our Gold Event Sponsor, [Nissan](#), Sustaining Annual Sponsor [Sodexo](#), Silver Annual Sponsor [Schneider Electric](#) and all of the rest of PERC's annual sponsors.

NOTE: Conference registrants are invited to see and drive the all-electric zero-emission Nissan Leaf at their convenience during the conference.

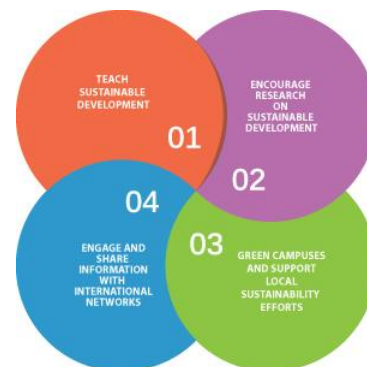
Panels & Sessions

Speaker bios can be found later in the packet.

Host Highlight: The UN Sustainable Development Goals: What makes this time different for Higher Ed?

Denice Wardrop, Director, Penn State's Sustainability Institute

Denice just returned from a conference on the UN Sustainable Development Goals and was "almost dumbfounded" at the responsibilities of higher education to be a part of their implementation. Denice will talk about Penn State's response to this challenge.



The PA Higher Ed Food Recovery Challenge Fewer GHGs, Less Hunger and Greater Visibility



PERC won EPA's Endorser of the Year Award this year for this unique partnership. We'll take a look at this initiative: where it is and where it is going, recognize the participating schools and examine the benefits of getting your school involved.

- **Luke Wolfgang** U.S. EPA Region III Sustainability Coordinator
- **Carty McMullen** Regional VP, Sodexo,
- **Josh Hooper** Executive Director of PERC

Modeling Sustainability Through Partnerships in State Parks and Forests

Michael Walsh, Deputy Secretary

Pennsylvania Department of Conservation and Natural Resources (DCNR)

Find out how your school can be part of DCNR's new Sustainability Initiative!

Mike Walsh is co-chair of the initiative and will discuss the full-cycle approach to sustainability at DCNR, the state agency responsible for 120 state parks and 2 million acres of forest land. As part of this work, **DCNR will develop partnerships with colleges and universities.** Mike will also discuss a new Pennsylvania public service internship program designed to create career pathways at DCNR and other state agencies for current college students. His talk will include time for Q&A in which Mike will seek input on how to more fully engage institutions of higher learning in the Sustainability Initiative. A great way to engage your institution in this valuable opportunity. Creating partnerships and promoting sustainability is familiar ground for Mike Walsh. In a previous role as Deputy Secretary at the Pennsylvania Department of Education, he created the "Pathways to Green Schools" initiative to promote a comprehensive approach to sustainability in Pennsylvania's K-12 schools.



PERC's Coming Attractions

A glimpse at some of the exciting events planned for the year, including...



Building Sustainability from the Inside Out--Erik Foley, Penn State University

College and Community—Connecting on Climate--Donald Brown, Widener Univ. Commonwealth Law School

Student Sustainability Symposium--Josh Hooper, PERC

PA Power Dialog--Neil Leary, Dickinson College

EnergyPath 2016--Kelly McCartney, The Sustainable Energy Fund

PERC Business Session: Executive Committee Election

The Executive Committee is PERC's essential leadership body, giving overall strategic direction to the organization as well as advising on ongoing and tactical matters. Each nominee serves a two year term and may stand for re-election if they so choose. Executive Committee members are elected by the board of governors at PERC's Annual Meeting. We will take a vote to elect the following nominees to the Executive Committee. Note that attendees from Member Schools may self-nominate from the floor.

Name		Institution
Returning Members		
Susannah Barsom	Director of Academic Programs, Sustainability Institute	Penn State University
Rich Bowden	Professor, Department of Environmental Science	Allegheny College
Neil Leary	Director, Center for Sustainability Education	Dickinson College
Kathy Schreiber	Professor, Geography	Millersville University of Pennsylvania
Tom Simpson	Sustainability Coordinator	Franklin and Marshall College
Kathy Straub	Professor & Department Chair, Earth and Environmental Sciences	Susquehanna University
New Nominees		
Ben Culbertson	Professor, Art & Design	Shippensburg University of Pennsylvania
Peter Walker	Dean, Falk School of Sustainability	Chatham University

Keynote Speech

"Building Bridges: Partnering to Drive Sustainability Forward"

[John Quigley](#), Secretary

Pennsylvania Department of Environmental Protection (DEP) is interested in finding ways that PERC schools can partner with DEP to 1) move sustainability forward and 2) mutually benefit both DEP and the Member Institutions. PERC's Executive Committee had a meeting with Mr. Quigley this summer to talk about the important role higher education can play in advancing sustainability and how we can begin to "build bridges" between DEP and the work that Pennsylvania Higher Education institutions are doing both on-campus and off. His ideas on the subject were positively invigorating; the Executive Committee invited him to give this keynote address at our annual meeting to share his thoughts. Come find out how your school can be a part of it and share your thoughts with the Secretary in the Q&A that follows his address.



Moderator: Kathy Straub, Susquehanna University

Poster Session

This year's poster session will be great chance to discover and discuss work happening in other Pennsylvania institutions. Attendees should find a wide array of topics and authors, from undergraduate to graduate to faculty to staff and many combinations thereof. Check it out! The Poster Session is made possible by a generous donation from the [Sustainability Institute](#) of Penn State University.



Showcasing Sustainability

This session will feature **Secretary Quigley** and will seek to give him--and all the attendees--an idea of some of the sustainability work that is that is being done by Pennsylvania higher education institutions. We will feature two areas of particular interest to DEP: water and climate. The first half of this hour will be devoted to campus projects that relate to water; the second will relate to climate. To get the conversation going, we will highlight two projects from each area...



Water

- **Dr. Jonathan Niles**, director of the [Freshwater Research Initiative](#) at Susquehanna University, furthering research on the ecological issues of the Susquehanna River.
- **Bridget Wadzuk**, alternate lead of the [Villanova Urban Stormwater Partnership](#) at Villanova University, advancing the evolving field of stormwater management.

Climate

- **Ken Shultes**, Associate VP for Sustainability & Facilities Planning, Dickinson College will discuss the **college's multi-pronged approach to climate change**.
- **Brandi Robinson**, Lecturer, Energy and Sustainability Policy Program, Penn State University explains the ways in which they have partnered with Pennsylvania communities to help with **municipal and county-based Greenhouse Gas Inventories**.

We encourage you to ***be prepared to talk about the work you are doing at your campus on either climate or water***. Let Secretary Quigley (and your colleagues across the state) know about the water and climate projects on your campus.

Moderator: Don Brown, Widener University Commonwealth Law School

PANEL 2015 Campus Sustainability Champions

PERC's Campus Sustainability Champion designation is a statewide effort to recognize individuals who are doing commendable work on moving sustainability forward on their campuses and communities. Four of the 2015 CSC designees will be giving an overview of their work and answering questions about how their lessons learned might apply to your campus.



Bennett Gould, student, **Allegheny College**. Bennett has shown student leadership in a variety of successful projects including, Bike Share, Energy Challenge, dorm ventilation and recycling.

Julie Vastine, director, [Alliance for Aquatic Resource Monitoring](#) (ALLARM) at Dickinson College. ALLARM engages communities to use science as a tool to investigate the health of their streams and to use the data they generate for aquatic protection and restoration efforts.



Julian Jones/ Johanna Hripto, students, **Lycoming College**. Julian and Johanna have initiated a number of sustainability projects on campus including leading the Food Recovery work on campus and leading a regional Food Recovery conference on the Lycoming campus.

Wendy Kedzierski, Director, [Creek Connections](#) at Allegheny College. Creek Connections is an effective partnership between Allegheny and K-12 schools to turn waterways into environmental labs.

Moderator: Kathy Schreiber, Millersville University

Breakout Session

Learn and share in small groups! The breakout session is a great chance to connect in small groups and breakout sessions on...

- **Food Systems**
- **Climate and Energy**
- **Water**

During the sessions, attendees will share what is happening at their schools, learn from colleagues at other institutions, and network on collaborative efforts.

Moderator: Rich Bowden, Allegheny College



Speaker Information

(Listed alphabetically by speaker's last name)

Susannah Barsom

Susannah Barsom is the Director of Academic Programs at Penn State's Sustainability Institute, a faculty member in the Department of Recreation, Park and Tourism Management, and this year's president of PERC. She oversees the Penn's Woods Project for faculty development, the Sustainability Leadership minor, the Field Guide to Teaching Sustainability at Penn State, and Penn State's sustainability competency framework, and co-chairs the student farm steering committee. A biological anthropologist whose research is in human reproductive ecology, she earned a Ph.D. in anthropology at Penn State University, an M.A. in anthropology at the University of Arizona, and a B.A. in anthropology at Wellesley College. Sue is active in several community initiatives, but has particular passion for advancing safe access for bicyclists and pedestrians through her service to the Centre Region Bicycle Advisory Committee, and to CentreBike, the area's bicycle coalition.



Building Bridges

2015 Annual Conference Penn State University

Donald A. Brown

Donald is Scholar In Residence for Sustainability Ethics and Law and Professor, Widener University School of Law where he teaches International Environmental Law, Human Rights Law, and Climate Change Law. He is also a part-time Professor, Nanjing University, Nanjing, China, where he lectures regularly on climate change ethics. He was also in the past two years a visiting Professor, Nagoya University School of Law, Nagoya, Japan and a visiting lecturer at Griffith University, Brisbane, Australia. He was also a contributing author to the Intergovernmental Panel on Climate Change (IPCC), 5th Assessment Report on the chapter on Equity. He has written over 170 book chapters and articles on climate ethics as well as 3 books. He previously served as director the of Office of Regulation and Enforcement in the New Jersey Department of Environmental Protection, Assistant Counsel and Assistant Attorney General in the Pennsylvania Department of Environmental Protection, and Program Manager for United Nations Organizations in the US EPA Office of International Activities.

Richard Bowden

Rich Bowden, Professor, Department of Environmental Science at Allegheny College, has been a member of PERC since it was founded in 2001, serving as Chair of the Executive Committee from 2001-2009, and 2011-12. He is involved in campus and local sustainability projects, and research on effects of acid deposition and climate change on forests.

Erik Foley

Erik Foley is the managing director of Penn State's Sustainability Institute which promotes sustainability in teaching, research, outreach and operations at all Penn State campuses and locations. Foley is also an adjunct professor of Smeal College of Business and the principal of Dais Consulting Group, which helps organizations achieve social and business value.

Bennett Gould

Bennett is a Junior at Allegheny College, majoring in Environmental Science with a minor in Community and Justice Studies. He has served as Assistant to Allegheny College's Sustainability Coordinator for the past three years, this year focusing on running the annual campus Energy Challenge and revamping a Bike Share program. At Allegheny, Bennett serves as an Outing Club Trip Leader; Ski Club Vice President; Bike Share President and Mechanic; and student radio station Disc Jockey, Programming Director (VP), and Technical Director. Bennett is a native to Pittsburgh, Pa. When out of class, he enjoys taking in the numerous natural areas Northwest PA has to offer by bike, foot, kayak, ski, snowshoe, and hammock.

Josh Hooper

Josh Hooper is the Executive Director of PERC and has been since 2010. In concert with PERC's Executive Committee, Josh led the transition from a voluntary association of universities and colleges to a 501(c)(3) non-profit impacting over 80 of Pennsylvania's higher education campuses. Josh was thrilled last year to accept the U.S. EPA's award to PERC as Endorser of the Year for the PA Higher Ed Food Recovery Challenge, a partnership between PERC, the U.S. EPA and Sodexo that he had helped to create.

Johanna Hripto

I am a Biology Major on the Ecology Track with a minor in French . My work with the Sustainability program at Lycoming includes being co-coordinator of the Sustainability Committee and project manager of the TerraCycle Program. This summer I studied abroad this summer in Grenoble, France. It was interesting to see the reaction to their country's new law that bans food waste from supermarkets and restaurants. I enjoyed talking to locals and combining my knowledge about food waste and French. After graduation I hope to either do research with aquatic biology or work with a non-profit organization for the environment or fighting hunger.

Julian Jones

I am a senior biology major in Lycoming College, taking the ecology track, with a minor in Spanish. My interests include environmental and sustainable practices on campus and in my community. I enjoy volunteering and on and off campus for various organizations including Food Recovery Network (FRN) and TerraCycle. I am currently the project manager of FRN and the Team Coordinator for the Sustainability Committee at Lycoming College and am committed to continuing to make positive changes on our campus. When I graduate I hope to work in the field of ecology, hopefully with water assessment and benthic macro invertebrates. I would also enjoy working in the field of sustainability. Anything that will help improve our planet, one step at a time.

Wendy Kedzierski

Wendy is the Project Director of Creek Connections, a watershed education outreach project of Allegheny College. She has been with Creek Connections since 2004, where she trains and manages a staff of 10-12 Allegheny College students plus one full time Pittsburgh Area Educator and oversees the project. Creek Connections' staff assist teachers with monthly water quality monitoring, develop and present activities to deepen students understanding of watershed topics, and assist in summer Creek Camps. Prior to this environmental education work she was a wetland and stream impact permit writer for the Commonwealth of Virginia for 3.5 years as well as an environmental consultant in Virginia for 2 years. She has a B.S. in biology from Pennsylvania State University and a M.S. in biology from Virginia Commonwealth University.

Neil Leary

Neil is Immediate Past President of the PERC Executive Committee and directs Dickinson College's Center for Sustainability Education, which promotes and facilitates collaborations to create sustainability learning opportunities in and out of the classroom. Neil teaches courses on climate change, campus greenhouse gas reduction, and sustainable communities and is the principal investigator for a NASA Global Climate Change Education project that partners Dickinson with community colleges to integrate climate literacy in the liberal arts. He has worked for 20 years on climate change vulnerability and adaptation and has participated in the science assessments of the Intergovernmental Panel on Climate Change since 1994.

Kelly McCartney

Kelly McCartney is Program Leader, Education for the Sustainable Energy Fund. In this role Ms. McCartney is responsible for planning, organizing, and executing educational program activities. Prior to joining Sustainable Energy Fund, Ms. McCartney has been employed as Curator at several museums and historical societies. During that time Kelly created exhibitions, tours, workshops, and programs. Ms. McCartney has a Bachelor of Arts in History from Ramapo College and a Masters of Arts from Seton Hall University in Museum Professions.

Deb McMahon

During the past 20 years, Deb has held numerous positions within the Sodexo organization, including 12 years as Regional Vice President. She has been involved in operations throughout the US, including Pennsylvania. Those 20 years with Sodexo, have provided the experience and knowledge to turn the goals of Sodexo's customers and partners into reality. In 2014, Deb assumed the role of Director of Universities Support. As Director of Universities Support, Deb works to ensure that all of the corporation's resources are available to all of Sodexo's accounts and client partners and are maximized for customer satisfaction. She is also the conduit for sharing information between Sodexo and various groups on campus such as students, faculty, staff and other customers.

Carty McMullen

A seasoned hospitality executive with over 30 years' experience who has a passion for diversity and a true zest for life, Carty started her career working in the Campus Dining arena as well as, local restaurants while attending school full- time.

Carty has a wealth of experience and knowledge with over twenty years of cross market experience in various senior, operations, marketing and business development roles. During her industry tenure with various companies, beginning as an Account Manager, she progressed to Regional Vice President,

where she managed and directed a \$130 million region, with over 100 client accounts.

Carty received a B.A. from the College of William and Mary and is an active member of WFF (Women's Foodservice Forum) and SHFM, Society for Hospitality and Food Management, where she served on the Board of Directors. In addition, she is member and Senior Corporate Liaison to the Pennsylvania Environmental Resource consortium (P.E.R.C.)

Jonathan Niles

Dr. Jonathan Niles is director of the Freshwater Research Initiative at Susquehanna University, furthering collaborative research on the aquatic ecological issues of the Susquehanna River.

Dr. Niles joined Susquehanna University in fall 2010 as a visiting professor. In May 2014, he was named director of the Freshwater Research Initiative, funded by a three year \$2.25 million dollar grant from the Richard King Mellon Foundation. Dr. Niles has a bachelor's in biology from St. Mary's College of Maryland. He received his master's in 2004 and PhD in 2010 in Wildlife & Fisheries Resources from West Virginia University. He is a freshwater fish ecologist who focuses particularly on cold-water species, with emphasis on brook trout in the Appalachians. Major focuses currently on mapping and sampling previously unknown trout streams as part of the Pennsylvania Fish and Boat Commissions, collaborative Unassessed Waters Initiative, and long term biological data collection at sites in Loyalsock Creek. Additional research includes work on smallmouth bass in the Susquehanna River, and the biological effectiveness of instream habitat structures in central PA farmland streams.

John Quigley

Pennsylvania Department of Environmental Protection (DEP) Secretary John Quigley has had a diverse career in the nonprofit, public, and private sectors, including eight years as the mayor of the City of Hazleton, government relations manager with Citizens for Pennsylvania's Future, and management positions with industry-leading companies.

He is a graduate of Bloomsburg University with a degree in economics, and holds a Master of Public Administration degree from Lehigh University.

He brings a unique perspective to his leadership of DEP. He's the first and only person in the history of Pennsylvania to hold the positions of both DCNR and DEP Secretary. From 2009 to 2011, he served as secretary of the Pennsylvania Department of Conservation and Natural Resources (DCNR). Prior to his appointment as secretary, Quigley worked for DCNR in several capacities, including overseeing strategic initiatives and operations, and as chief of staff.



Building Bridges

2015 Annual Conference Penn State University

John Quigley's diverse career in the nonprofit, public and private sectors has made him a sought-after expert by industry, government and non-profit leaders across the United States and abroad.

Brandi Robinson

Brandi Robinson has been a lecturer and academic adviser in the John and Willie Leone Family Department of Energy and Mineral Engineering for the past five years where she teaches courses for the Energy and Sustainability Policy program (GEOG 432 Energy Policy and GEOG 438W Human Dimensions of Global Warming). Prior to that, Ms. Robinson was a policy analyst and account manager for Environmental Credit Corp., a leading US-focused greenhouse gas offset project developer. In 2005, Ms. Robinson completed a Master of Geography from Penn State University in which she focused on local scale greenhouse gas mitigation strategies for the University Park campus. After graduating, Ms. Robinson worked for the Office of Physical Plant to complete greenhouse gas emissions inventories of the Commonwealth campuses and work on University-wide mitigation planning efforts. Ms. Robinson is also a consultant for the Center for Climate Strategies.

Kathleen V. Schreiber

Kathy Schreiber is Professor, Department of Geography at Millersville University of Pennsylvania. She teaches the geography department's environmental-based courses, and enjoys engaging her students in experiential education and environmental service. Her research focuses on climate and its interrelationships with the biosphere and environmental quality. She is presently engaged in two research projects, one evaluating climatic relationships with African malaria, and the other with Chesapeake Bay water quality. She has been active in promoting sustainability on the MU campus, and is presently working to finalize that campus climate action plan. She is a PERC executive committee member, and chair of the American Meteorological Society Committee on Environmental Stewardship.

Ken Shultes

Kenneth E. Shultes is Associate Vice President for Sustainability and Facilities Planning at Dickinson College.

Ken graduated from Dickinson College in 1989 and still hasn't left campus! Ken has held positions of leadership at the college for 20 years -- assuming his current role in 2014. A prime focus and absolute passion throughout his Dickinson tenure has been sustainability, and specifically connecting operations initiatives to the curriculum and the overall student experience.

Ken oversees the college's organic farm and was instrumental in attaining LEED Gold certification for 6 projects at Dickinson. He is currently leading the college's march towards carbon neutrality through the implementation of the college's Climate Action Plan (CAP) and Green Revolving Loan Fund.

Ken is on the Board of Directors for the Central Pennsylvania Chapter of the GBC, is a member of APPA and SCUP, and completed the Executive Education for Sustainability Leadership program from the Harvard School of Public Health in 2014.

Kathy Straub

Katherine Straub is Professor and Department Chair in the Earth and Environmental Sciences department at Susquehanna University. She also directs Susquehanna's new interdisciplinary Environmental Studies program. Kathy founded Susquehanna's Committee on Sustainability and chaired it for three years, played an instrumental role in the University's decision to pursue LEED certification of its new science building, and spearheaded the inclusion of a major sustainability initiative in the university's 2020 strategic plan. Kathy has been active in PERC for nearly a decade, and has served on the Executive Committee for three years. She most recently organized PERC's January 2015 "Teaching About Climate Change" workshop, held at Susquehanna. She is currently President-Elect of PERC.

Julie Vastine

Julie Vastine is the director of the Alliance for Aquatic Resource Monitoring (ALLARM) at Dickinson College. She is responsible for leadership of the ALLARM program and providing technical assistance to watershed communities. Julie has worked in the volunteer monitoring field for twelve years and was recently appointed to the National Water Quality Monitoring Council as the co-volunteer monitoring chair. A native of the Chesapeake Bay, Julie enjoys working with community organizations to build their capacity to monitor streams and to monitor, protect, and restore water quality in Pennsylvania.

Bridget Wadzuk

Bridget is an Associate Professor in the Department of Civil and Environmental Engineering at Villanova University and works with the Villanova Urban Stormwater Partnership and the Villanova Center for the Advancement of Sustainable Engineering. Dr. Wadzuk teaches courses and researches in the area of water resources. She has over 10 years of experience specializing in stormwater management, with research on designing, implementing, monitoring, analyzing, and modeling various stormwater control measures (SCMs), including constructed wetlands, bioretention, green roofs, and infiltration trenches. Her focus within these systems has been to develop an understanding of the hydrologic and hydraulic processes within SCMs and manipulate them to optimize design and performance.

Dr. Wadzuk is also engaged in community outreach and education on stormwater issues, including elementary and high school students as well as the broader stormwater community.

Denice Wardrop

Denice Heller Wardrop was one of the first Systems Engineers to graduate from the University of Virginia, which she followed with an MS in Environmental Sciences from the same institution. She practiced as a consulting environmental engineer for over a decade before coming to her senses, embracing football as well as basketball, and finishing a PhD in Ecology at Penn State. She is currently the Director of Penn State's Sustainability Institute, Senior Scientist, and Professor of Geography and Ecology. The SI is now approaching completion of its third year as a place that represents all functional areas of Penn State; the work of its staff has made an undeniable and indelible mark on the institution as a whole. She continues to work on how human activities impact the ability of natural systems to provide ecosystem services; her favorite teaching activity involves escorting multi-disciplinary teams of students to Peru. She loves the opportunity to work on preparing students to navigate a new world.

Michael Walsh

Mike Walsh was appointed Deputy Secretary for Administration at DCNR on June 1, 2015. In this role he manages the administrative operations of the agency, with responsibility for the bureaus of Human Resources, Information Technology and Administrative Services. DCNR Secretary Cindy Adams Dunn recently named Mike as Co-Chair of the newly launched DCNR Sustainability Initiative. This agency-wide effort will advance energy-savings projects and sustainability practices at the 120 state parks and 2 million acres of forest lands managed by DCNR.

Mike has promoted and managed sustainability and energy efficiency programs in previous leadership positions he held in state government and higher education. Notably, as Deputy Secretary at the Pennsylvania Department of Education, Mike created the "Pathways to Green Schools" initiative to promote a comprehensive approach to sustainability in Pennsylvania's K-12 educational system. Mike is a graduate of Saint Vincent College and received his master's degree from the H. John Heinz III School of Public Policy and Management at Carnegie Mellon University.

Luke Wolfgang

Luke is a Sustainability Coordinator with EPA's Region 3's Land and Chemicals Division in Philadelphia, PA. He is the Team Leader of EPA's Food Recovery Challenge and WasteWise Programs in EPA's Mid-Atlantic Region. Luke provides sustainable food management and solid waste recycling technical assistance to Businesses and Institutions in the area including Grocery Stores, Colleges and



Building Bridges

2015 Annual Conference
Penn State University

Universities, Sports and Entertainment, and Hospitality sectors to name a few. Luke has a B.S. in Environmental Engineering Technology from Temple University.

Sponsor Information

Sustaining Annual Sponsor PHE-FRC Funding Sponsor



When it comes to supporting educational mission and sustainability goals, Sodexo sees itself as a strategic partner that can ensure exceptional student experiences by delivering essential quality of life services. Sodexo has been a recognized leader for improving their partners' performance by managing important services such as healthy, delicious dining and attractive, clean and comfortable environments that support successful learning around key areas such as planet, health, community and people.

From a welcoming environment in the dining hall, to energy efficient buildings and innovative offers in sporting venues, their goal is to ensure the success of their higher education partners by providing Quality of Life services tailored to each campus' specific goals and that align with PERC's sustainability objectives.

Sodexo works to reduce environmental impacts at our partner's sites, promote sustainable sourcing practices and optimize natural resource consumption. Sodexo has identified eight commitments for protecting the environment:

1. We will ensure compliance with our Global Sustainable Supply Chain Code of Conduct.
2. We will source local, seasonal or sustainable grown or raised products.
3. We will source sustainable fish and seafood.
4. We will source and promote sustainable equipment and supplies.
5. Energy and Emissions: We will reduce our carbon footprint.
6. Water and Effluents: We will reduce our water footprint.
7. We will reduce organic waste in all countries where we operate and all clients' sites.
8. We will reduce non-organic waste in all countries where we operate and all clients' sites.

For more information, please visit our website at www.sodexo.com



Building Bridges
2015 Annual Conference
Penn State University

Gold Event Sponsor

Nissan LEAF[®] 100% Electric

Nissan is the world's leader in electric vehicle sales with more than 188,000 all-electric LEAF vehicles sold globally and more than 84,000 sold in the U.S. Nissan recently introduced the 2016 LEAF, which has available best-in-class range of 107 miles, making it the first affordable EV to get more than 100 miles on a single charge.

LEAF seats up to five passengers and offers the space and range to meet every day needs, as well as lower maintenance costs, zero spending on gas and a starting price after tax incentives competitive with a comparable gas-powered car.

Visit www.nissanusa.com/LEAF for details.



Building Bridges

2015 Annual Conference
Penn State University

Gold Annual Sponsor



Under the leadership of its founders, and with cooperation from PERC's Member Schools, Community Energy, Inc. (CEI) built the voluntary market for renewable energy, spurring the demand for hundreds of Megawatts of new wind generation ahead of state mandates. CEI currently delivers renewable energy to over 120,000 customers through direct sales and 21 partnerships with electric utilities and suppliers.

Community Energy is constructing Keystone Solar, a 5 MW solar project in Lancaster County. As part of a special PERC/ Community Energy program, several PERC schools, including F&M, Eastern and Millersville have taken leadership roles and contracted to purchase solar power from the project.

More information about Community Energy is available on the web at www.communityenergyinc.com

Gold Annual Sponsor



PERC Gold Sponsor Waste Management, Inc., based in Houston, Texas, is the leading provider of comprehensive waste management services in North America. Through its subsidiaries, the company provides collection, transfer, recycling and resource recovery, and disposal services. It is also the largest residential recycler and a leading developer, operator and owner of waste-to-energy and landfill gas-to-energy facilities in the United States. In addition to higher education, the company's customers include residential, commercial, industrial, and municipal customers throughout North America.

Waste Management has implemented programs specifically targeted at helping higher education increase sustainability. For more information, go to www.wm.com/enterprise/college-and-university

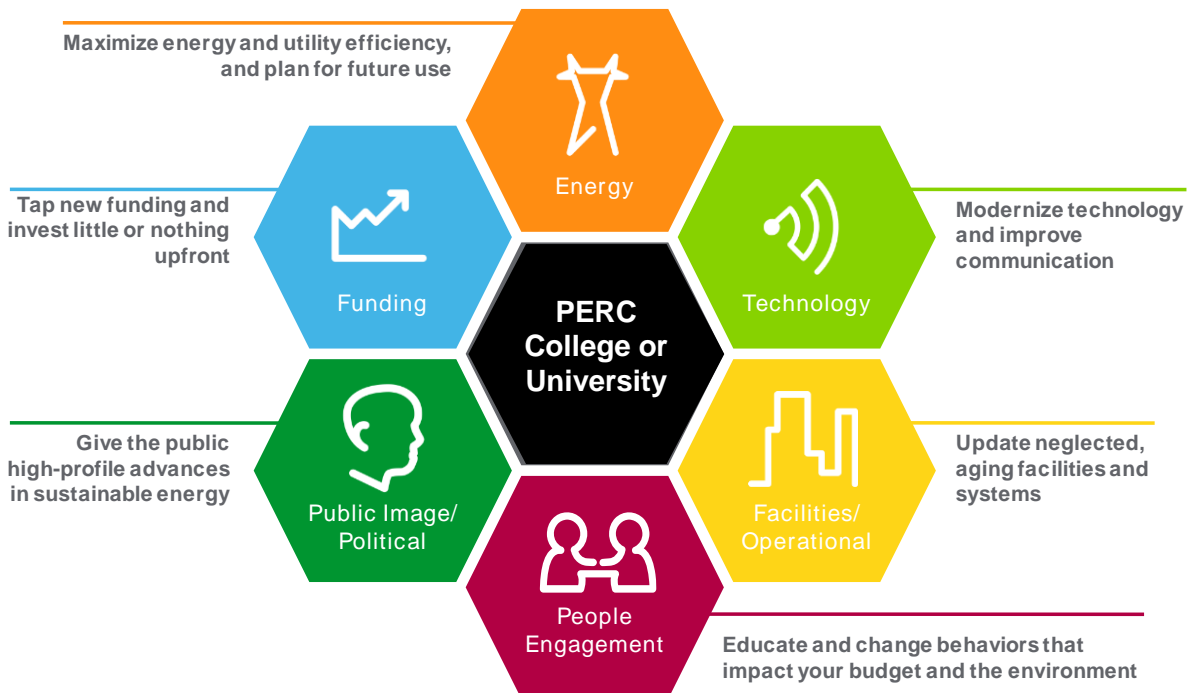
Silver Annual Sponsor



PERC Silver Sponsor Schneider Electric's Energy & Sustainability Services provides energy management and sustainability services to our higher education clients.

Our philosophy stems from aligning our solutions to the vision, mission and goals of your college or university. The client is at the center of our process and that is why we have had such satisfied clients over the years- it is our clients that helped shaped the successful end result of their projects.

Enabling efficiency, savings, & performance



We are committed to sourcing:

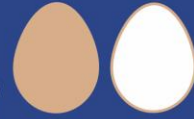
100%

sustainable fish
and seafood.



Committed to

100%



CAGE-FREE SHELL EGGS BY 2015.

100% of our eggs will be
from cage-free hens by 2020.

OUR MILK IS *locally* SOURCED
AND RBST-FREE.

A
better
tomorrow
starts
today.

1st in the industry
to have a company-wide
animal welfare policy.



Recognized by the Humane Society of
the United States for our comprehensive
commitments to **ANIMAL WELFARE.**

Committed to
supporting small-
and medium-sized
businesses around
the world with \$1
billion in purchases
of products and
services by 2017.



SUPPORT 2,000 FARMERS
ACROSS THE COUNTRY.
COMMITTED TO INCREASING
PURCHASES OF LOCAL PRODUCTS.



Sodexo Foundation
HAS GIVEN MORE THAN \$25
MILLION IN GRANTS TO HELP
END CHILD HUNGER IN AMERICA.



Eliminated - 5 tons of salt
and 14 tons of sugar from
consumers' diets with our
award-winning
Mindful program.



OFFICIAL ENDORSER OF THE EPA
FOOD RECOVERY CHALLENGE.
COMMITTED TO *reducing waste*
AT EVERY SITE WHERE WE OPERATE.

COMMITTED TO REDUCING CARBON
EMISSIONS ACROSS OUR VALUE
CHAIN BY **34%** BY 2020.



RANKED IN THE TOP 5 BY
DIVERSITYINC
FOR 6
CONSECUTIVE YEARS



100% Electric **Nissan LEAF**[®]
Americas Best Selling Electric Vehicle*

Zero Emission

Zero Emissions

It doesn't get any cleaner
than that.



*Source of data: InsideEVs.com Cumulative Sales Data (December 2010 - May 2015)

www.NissanUSA.com/LEAF

Schneider Electric

A world where we can achieve more while
using less of our common planet.

<https://www.facebook.com/SchneiderElectricUS>

**Schneider Electric is a
proud sponsor of PERC**

Schneider Electric's SE TV!
Hundreds of video clips and educational
pieces that provide information regarding
Schneider Electric's services and products.

<http://tv.schneider-electric.com>



Energy University Website!

Energy University is a FREE, online, educational
resource, offering more than 200 vendor-neutral
courses on energy efficiency and data center top-
ics to help you identify, implement, and monitor
efficiency improvements within your organization.

<http://www.schneider-electric.com/energyuniversity>

